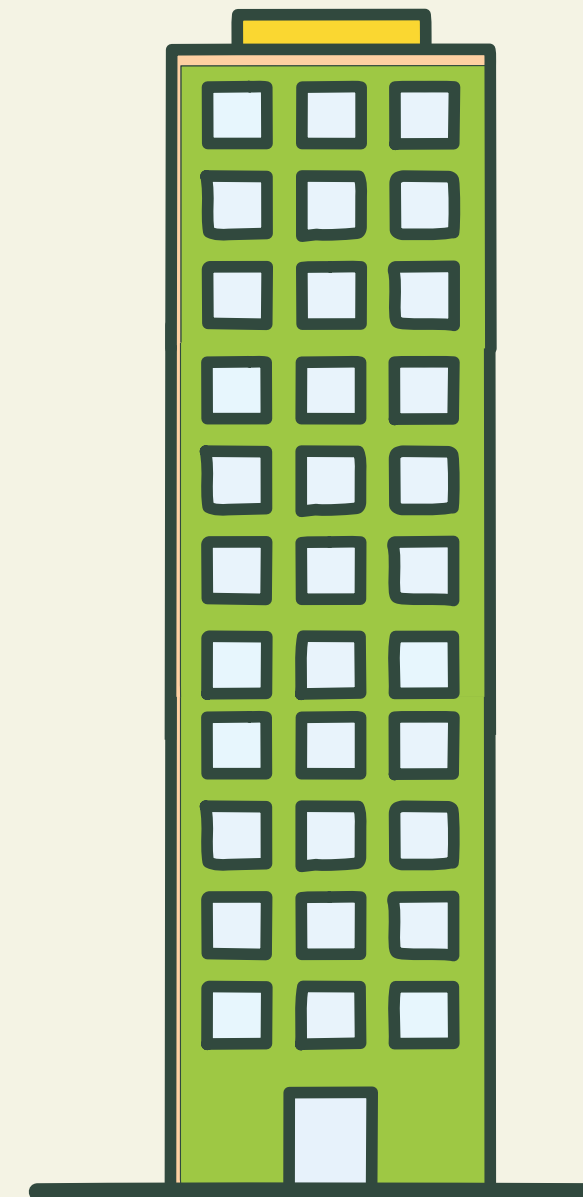


# ALL-ELECTRIC MULTIFAMILY PROGRAM BEFORE YOU BEGIN

SF Net-Zero Emissions By

2040

SF Majority Multifamily

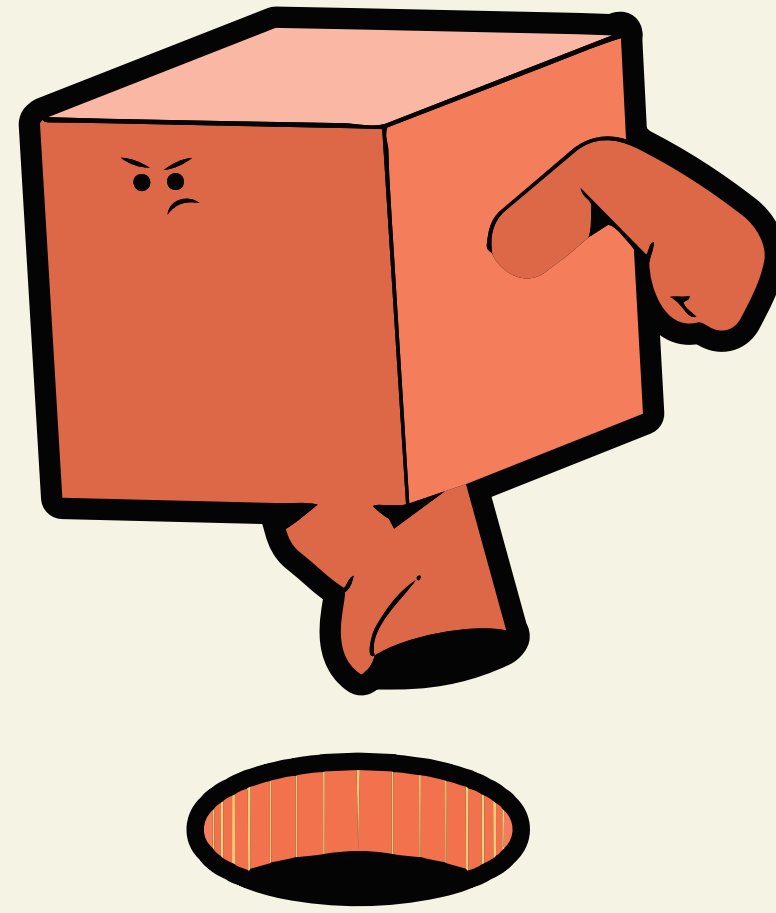


San Francisco

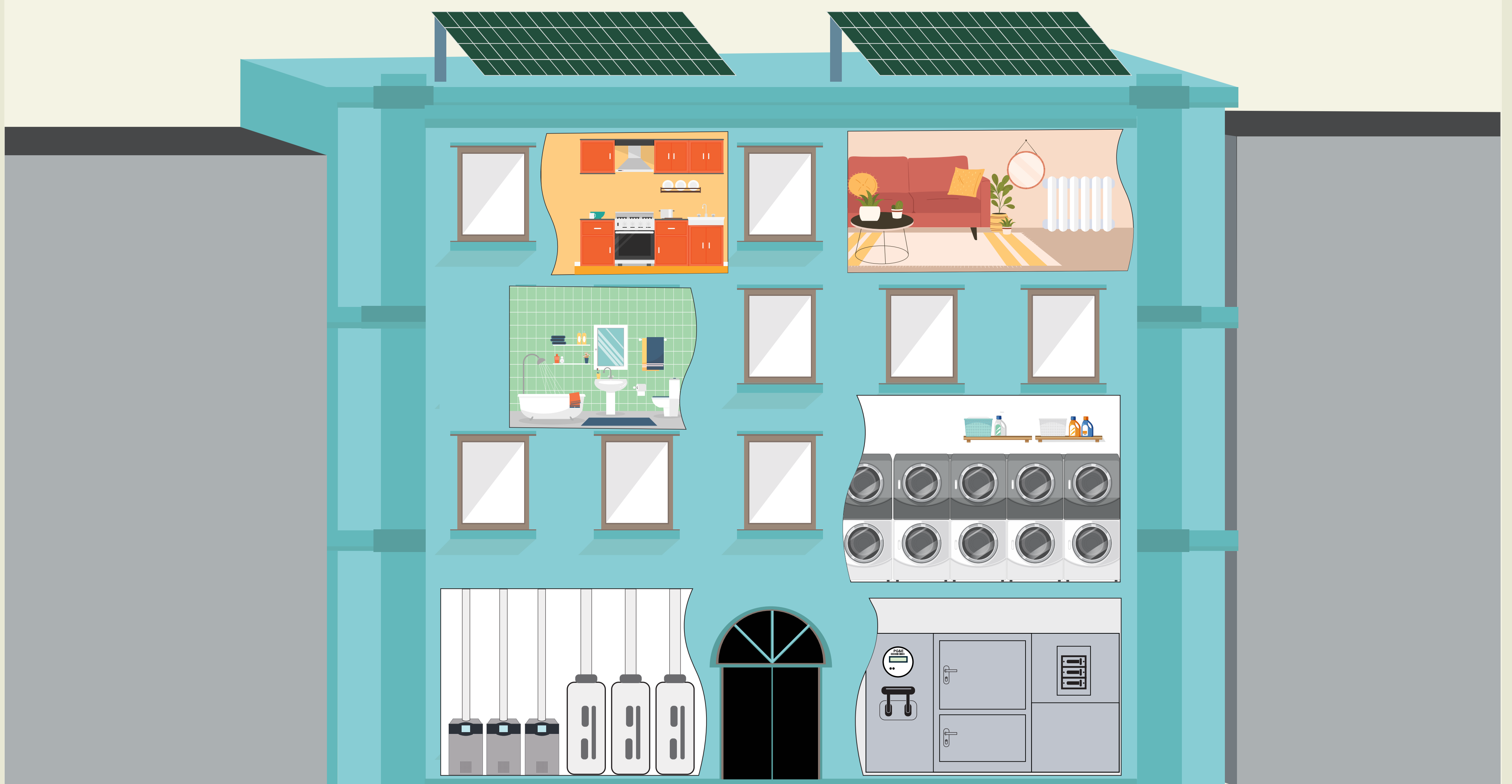


Other Cities

Electrification  
Solutions Made  
for Houses



## GET INFORMED WITH A CUSTOMIZED ELECTRIFICATION ROADMAP



### THE ALL-ELECTRIC MULTIFAMILY PROGRAM:

- Evaluates Existing Conditions and Identifies Load-Reducing Opportunities
- Identifies Construction Challenges & Service Capacity Needs
- Proposes Strategic Order of Steps to Fully Electrify

**SUPPORTS BUILDING OWNERS IN TAKING MEANINGFUL FIRST-STEPS**

# ALL-ELECTRIC MULTIFAMILY PROGRAM YOUR ELECTRIFICATION JOURNEY



An example taken from a recent evaluation of a 6-story building with 150 residents.